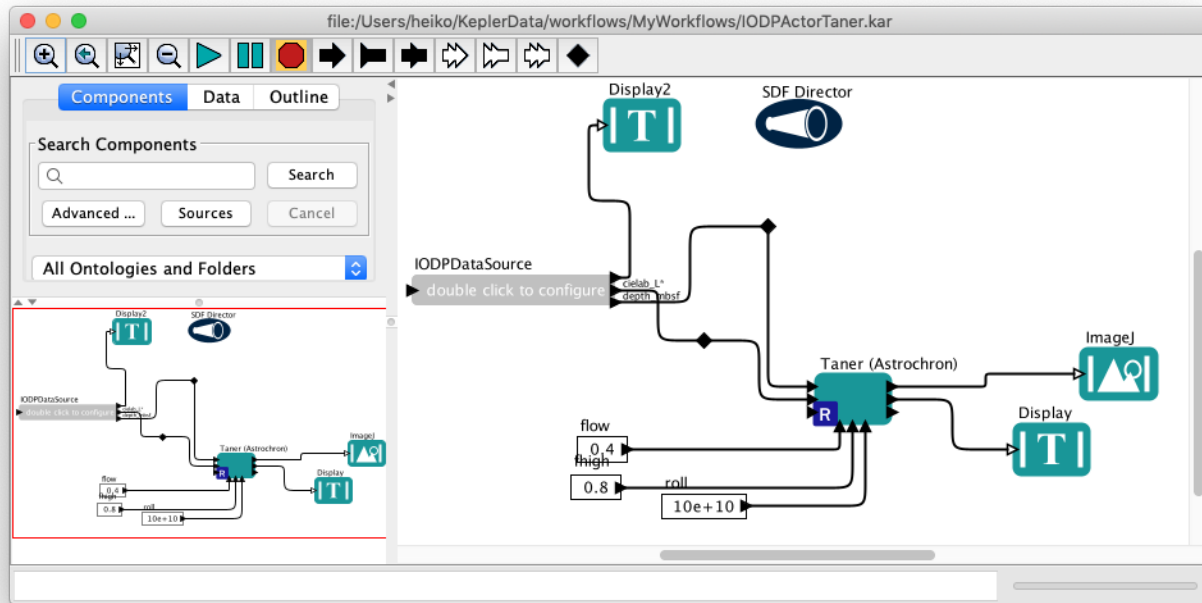


Kepler (EARTHSEQUENCING Edition)

We have adapted and extended the [Kepler](#) Scientific Workflow system, which is itself based on [Ptolemy II](#), by specific actors that interact with Earthsequencing workflows and data.



Individual Actors are still under ongoing development, however the ability to directly import IODP data from our database is already useful, particularly in interaction with externally provided libraries (for example Astrochron).

While Kepler is Java based, and inherently cross-platform, our EARTHSEQUENCING actors for now are still macOS only (other versions will follow).

Source code for the keplerSwift component is available upon request.

[Download Link to macOS10.14 Disk Image \(.dmg\)](#)

To run above example, install Kepler-Earthsequencing from below disk image.

Pre-requisites:

- macOS 10.14
- [R computing library](#)
- [Astrochron](#) library within R
- [ImageJ](#) (for graphical output)

Example output:

