

# IODPImageSplicer

now streamlined to IODPCoreImage

Version 0.1.28 (61) (macOS)

Here a little tool that accesses our database to generate core image tracks. See bottom of this page for an overview Poster pdf.

Please enter or select a ODP/IODP Site name in the field provided.

If a Site was previously viewed, images are pre-generated and or cached and should be fast.

Otherwise be a little patient.

This is currently macOS only, and alpha Quality.

IODP Core images are available at <http://web.iodp.tamu.edu/LORE/>

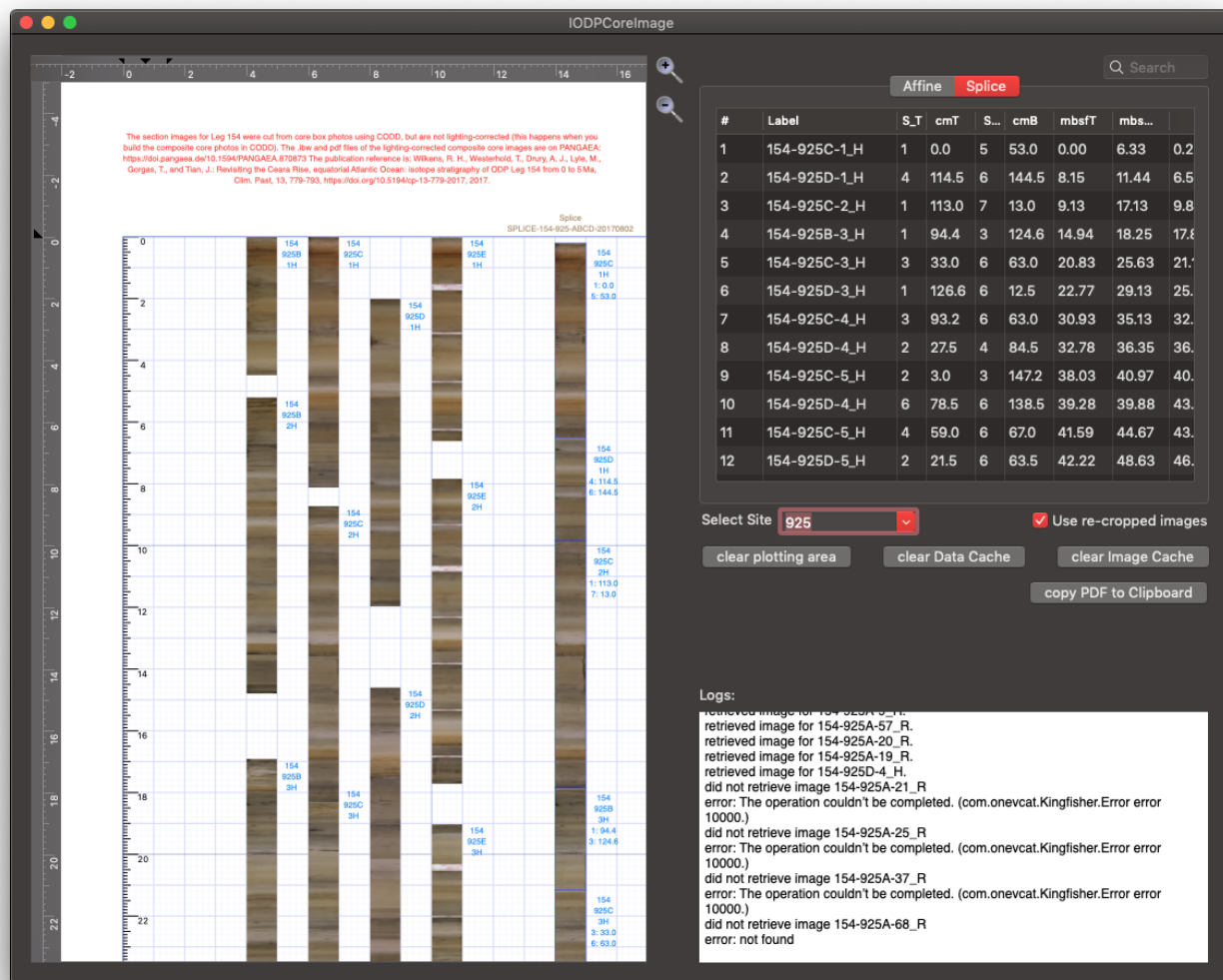
ODP images were partially extracted by the project

<http://instaar.colorado.edu/~jenkinsc/IODPimagestrips/>

Images displayed by IODPImageSplicer are downsampled from their original resolution to achieve acceptable processing speed (~500 pixels wide for IODP LSIimg, ~100 for manually cropped core table photos).

Tip: after clicking on the main canvas, there is a zoom option (either from the View menu, or via keyboard short-cuts (+, -)

<https://paloz.marum.de/SparkleUpdaters/IODPCoreImage/IODPCoreImage.zip>



Your browser does not support the HTML5 video element

Citation:

Drury, A.J., Kotov, S., Rochholz, F., Wilkens, R., Pälike, H. (2018), Uniform, Rapid, Open Access Database for Shipboard IODP/ODP/DSDP Images, [Abstract \[PP41F-1923\]](#) presented at 2018 Fall Meeting, AGU, Washington, D.C., 10-14 Dec.



Drury Images Poster AGU2019\_upload\_sm2.pdf